



Pursuant to Articles 56, 56a and 56b of the Maritime Code (the Official Gazette of the Republic of Croatia 181/04, 76/07, 146/08, 61/11, 56/13, 26/15, 17/19), Article 3 (7) of the Regulation on the conditions to be met by ports (110/04), Article 61 to 82 of the Ordinance on Conditions and Manner of Maintaining Order in Ports and Other Parts of the Internal Waters and Territorial Waters of the Republic of Croatia (the Official Gazette of the Republic of Croatia 72/21) and Directive (EU) 2019/883/EC of the European Parliament and other applicable regulations,

NAUTIČKI CENTAR TROGIR d.o.o., Zagreb, Maksimirska cesta 282, OIB: 07388469760, MBS: 060083404 (in the following text: NCT), represented by Management board – director Željko Baotić, as a port management company,

On 28.04.2025. adopts and publishes

## **PLAN FOR THE RECEPTION AND HANDLING WASTE AND CARGO RESIDUES FROM VESSELS**

### ***1. GENERAL PROVISIONS***

The Plan for the reception and handling of waste and cargo residues from vessels (hereinafter: the **Plan**) stipulates the reception and handling of ship waste at the location of the marina or port of nautical tourism – the Marina Baoti managed by NCT, including the dry dock area, disposal area, parking area and all others ancillary areas related to the marinas activities.

The plan regulates:

1. the method and procedure of the reception and handling of waste
2. the protection of the marine environment from the discharge or disposal of ship's waste
3. the protection against pollution of the land area within the territory of the Marina Baotić

***All users of the services of the Marina Baotić are obliged to comply with this Plan.***

All natural and legal persons using the services of the Marina Baotić are obliged to comply with and obey the provisions of the Act and the Ordinance, as well as internal regulations from the moment of entry and for the entire period of stay in the Marina.

## **2. DEFINITIONS**

For the purposes of this *Plan*, the following definitions shall be used:

**1. Ship** - other than a warship, is a ship, submarine, yacht, boat, fixed offshore facility or floating object, unless otherwise specified by the provisions of this Chapter of the Regulations;

**2. MARPOL Convention** - International Convention for the Prevention of Pollution from Ships, that is, its updated version;

**3. Ship waste** - all waste, including cargo residues, generated during the operation of a ship or during embarkation, disembarkation and cleaning activities and falling within the scope of Annexes I, II, IV, V and VI to the MARPOL Convention, as well as passively fished waste;

**4. Port reception facility** - any facility that is fixed, floating or mobile and capable of providing the service of receiving ship waste;

**5. Scheduled traffic** - traffic based on a published or planned arrival and departure schedule between established ports or repeated crossings representing an accepted schedule and the traffic of excursion ships characterized by regular and frequent dockings in ports;

**6. Waste water** - sanitary waste water that falls within the scope of Annex IV of the MARPOL Convention;

**7. Port reception facility operator** - authority managing the port or any legal or natural person to whom the port management authority, in accordance with the provisions of the special regulations, has granted a concession to carry out a registered port reception activity in the port area open to public transport or which carries out such activities under a commercial contract in a special purpose port;

**8. Port open to public traffic** - a seaport that can be used under equal conditions by any natural and legal person, in accordance with its purpose and within the limits of available capacities, as determined by the special regulations governing maritime domain and seaports;

**9. Special Purpose Port** - means a seaport in special use, as determined by the special regulations governing maritime domain and seaports;

**10. Hazardous waste** - waste and/or cargo residues falling within the scope of Annex II of the MARPOL Convention or possessing a hazardous property specified in the special regulations governing waste management;

**11. Passively fished waste** - waste collected in nets during fishing operations

**12. Sufficient storage capacity** – a sufficient capacity to store waste on board from the moment of departure to the next port of call, including waste likely to be generated during the voyage

**13. Regular port dockings** - repeated voyages of the same ship that form a constant pattern between established ports or a series of voyages from and to the same port without intermediate dockings

**14. Frequent port moorings** - ship visits to the same port at least once every fourteen days

**16. Processing** - recovery or disposal procedures, including preparation procedures prior to recovery or disposal

### **3. WASTE MANAGEMENT**

Waste from vessels shall be treated in such a way as to avoid:

- endangering human health
- the pollution of water, sea, soil and air
- the occurrence of an explosion or fire
- the appearance of unpleasant odors

In accordance with the provisions of the Act on Sustainable Waste Management (the Official Gazette of the Republic of Croatia No 94/13, 73/17, 14/19, 98/19) and the provisions of this **Plan**, it is necessary to take into account when collecting and handling waste:

- that the waste is collected separately in properly constructed containers, tanks or vessels,
- that containers, tanks or vessels bear the prescribed markings depending on the type of waste,
- that different types of hazardous waste do not mix with each other.

***The discharge of oily and polluted waters, waste oil and any oily and solid waste into the sea is strictly prohibited.***

***The use of onboard toilets is prohibited in the Marina.***

***In order to preserve the cleanliness of the sea and the environment, the use of automatic bilge draining pumps is prohibited.***

***In case of major pollution, the Marina Baotić will identify the person who caused it, take measures to prevent pollution, remove the vessel in order to protect the environment, people and vessels, and inform the competent Captaincy and other competent state authorities, and charge the person who caused it for the costs incurred.***

Marina Baotić has the 50 meter long floating dam and biodegradable degreaser, protective equipment and means for pollution remediation, as well as eco set at the gas station in case of pollution with oil derivatives. In case of major pollution and pollution of the sea, the company “Cian d.o.o.”, which is authorized to perform the above operations, will be called.

### **4. ASSESSING THE NEED FOR RECEPTION FACILITIES**

This **Plan** was adopted in order to ensure optimal and safe handling and reception of solid and liquid waste, cargo residues from vessels, and oily water and faeces as defined by the

International Convention for the Prevention of Pollution from Ships, all taking into account the usual needs of waterborn craft and their passengers who usually visit the Marina Baotić.

The Management of the Marina Baotić regularly monitors the usual needs of the waterborne craft that visit it, and depending on the categories and quantity of waste and their changes it can change the place, time and manner of receiving and handling waste and cargo residues.

## **5. DESCRIPTION OF THE TYPE AND CAPACITY OF PORT RECEPTION FACILITIES FOR SHIP WASTE**

. This **Plan** was adopted in order to ensure optimal and safe handling and reception of solid and liquid waste, cargo residues from vessels, and oily water and faeces as defined by the International Convention for the Prevention of Pollution from Ships, all taking into account the usual needs of waterborn craft and their passengers who usually visit the Marina Baotić. An illustration of the locations of port reception facilities is attached

The Management of the Marina Baotić regularly monitors the usual needs of the waterborne craft that visit it, and depending on the categories and quantity of waste and their changes it can change the place, time and manner of receiving and handling waste and cargo residues.

The Management determined that the waste from vessels should be received and disposal in certain containers, with that all users are familiarized.

For this purpose, the Management has designated a location for placing reception facilities and familiarized all users with it:

- **municipal waste** is disposed of in plastic green containers that are placed in the recycling zone
- **paper, plastic packaging, glass bottles and metal cans** are specially collected in properly colored (glass - green, plastic packaging - yellow, paper - blue, metal cans - brown) or marked plastic containers located in the recycling zone
- **used engine oil or oily water** is collected in a metal container, which is located in the eco-zone (locked covered enclosed space with labels for the disposal of hazardous waste)
- **packaging contaminated with hazardous substances** is collected and stacked on pallets that are raised from the floor and designated for this purpose within the eco-zone
- **used zinc anodes** are collected in a labeled metal container located in the eco zone
- **used and discarded metal chains** are collected in a labeled metal container located in the eco zone
- **accumulators and batteries** are disposed of in the eco-box placed on a pallet in the eco-zone
- **oily waste (rags, oakum, etc.)** is collected in labeled metal containers with lids that are placed inside the eco zone
- **metal shavings** are collected in big-bags that are placed in the eco-zone
- **fecal water** is pumped by a mobile “Seavec” pump with a tank that is emptied after use
- **bilge water** is pumped into a collection tank which is connected to the sanitary sewer
- **bulky waste** is collected in metal containers for bulky waste

## **6. RECEPTION AND COLLECTION PROCEDURE, ACCORDING TO THE TYPES OF SHIP WASTE**

In the Marina Baotić, ships with a length of approx. 25 m are moored. In doing so the following types of waste are generated and disposed of:

- **municipal waste** — disposed of in plastic green containers with a capacity of 1100 l which are placed in a covered recycling zone – **6 green containers** for municipal waste each 1100 l;
- **waste from vessels** (*paper, plastic packaging, glass bottles and metal cans*) are specially collected in properly colored:

(glass – green – glass collected in plastic containers, each 350 l, there are 60 pieces in total;  
plastic packaging – yellow – 2 yellow containers each 1100 l;  
paper – blue – 2 blue containers each 1100 l;  
metal cans - brown) 7 brown containers each 200 l;

or marked plastic containers with a capacity of 1100 l, located in the recycling zone (a locked covered enclosed space).

The waste is disposed of separately in containers of appropriate colors, which are then emptied by the concessionaire's special vehicles for waste collection.

Paper, cardboard and plastic are pressed in a press (press container max. 7 tones which is then taken away by the authorized concessionaire);

- **hazardous waste** - *used engine oil or oily water* is collected in a metal container with a capacity of 1000 l and a lid, under which there is a secondary tank (a spill containment pallet) for collecting possibly spilled oil. There are also 3 big bags for the remains of hazardous waste.

Smaller vessels, fishing vessels and yachts of up to 12 crew members may dispose of waste oil volumes up to (500 l) in waste oil containers without prior notice. After each removal of waste oil or oily water, a chemical-physical analysis is performed, which is delivered to the Marina Baotić;

- **packaging contaminated with hazardous substances** is collected and stacked on pallets that are raised from the floor and designated for this purpose within the eco-zone;

- **used zinc anodes** are collected in a labeled metal container 208 l with lid, located in the eco zone;

- ***used and discarded metal chains*** are collected in a labeled metal container located in the eco zone;
- ***accumulators and batteries*** are disposed of in the eco-box placed on a pallet in the eco-zone;
- ***oily waste*** (*rags, oakum, etc.*) is collected in labeled metal containers 208 l with lids, that are placed inside the eco zone (7 containers 208 l each);
- ***metal shavings*** are collected in 3 big bags that are placed in the eco-zone;
- ***fecal water*** is pumped by a mobile “Seavec” pump with a tank 2000 l, that is emptied from authorized firm, after use);
- ***bilge water*** is pumped into a collection tank which is connected to the sanitary sewer;
- ***bulky waste*** is collected in metal containers for bulky waste - 3 metal containers 7m<sup>3</sup>.

Bulky waste is collected as needed and taken away by the contract concessionaire.

A larger amount of waste will be collected directly from the vessels by the collector and taken from the site, all upon invitation and prior agreement of the owner of the vessel with the responsible person of this ***Plan***.

Upon reception of waste and/or cargo residues, the master of the ship or other appropriate person will be issued a certificate regarding the quantity and type of waste received, and regarding the received hazardous waste, an accompanying sheet is issued, in accordance with the applicable regulations (the relevant form is attached to this ***Plan***).

## ***7. SYSTEM OF FEES FOR SHIP WASTE RECEPTION***

The costs of reception and removal of large quantities of waste are borne by the owner of the vessel, on the basis of the “polluter pays” principle.

The Marina Baotić will collect an indirect fee for the reception of waste as follows:

- vessels having a nautical berth contract shall pay an indirect waste acceptance fee (irrespective of the amount of waste handed over, i.e. whether or not they hand over the waste to the port facility) at a flat rate of 1% of the amount of the fee charged by that marina under the berth contract.
- if vessels are in transit, they shall pay an indirect fee for the reception of waste at the time of entry at a flat rate of 1% of the berthing price.

The indirect fee is established as the sum of the administrative cost (regardless of the category, size and type of ship, it is calculated on the basis of the actual administrative costs divided by the total number of entries of all ships in the port during the year) and the direct operating cost.

The entries of scheduled traffic ships and excursion ships that hand over ship waste at another port of call are not included in the calculation of the indirect fee, provided that the latter has adequate reception facilities and with upon presentation of an exemption certificate.

Boats and yachts, when in transit, shall pay an indirect fee for the reception of waste when entering a port other than a port where they have a contracted communal or nautical berth, including the berths and anchorages of those ports, irrespective of the actual handover of the waste at a flat rate of 1% of the berthing price.

The fee for the handover of cargo residues shall be paid by the user of the port reception facility in accordance with the specially established contractual provisions on the loading or unloading of cargo. Exceptionally, for the handover of cargo, a direct fee is calculated based on the actually delivered amount of cargo residues.

## ***8. DISPLAY AND CALCULATION OF RECEPTION OF WASTE AND CARGO RESIDUES ACCORDING TO TYPES OF WASTE AND CARGO RESIDUES***

The Marina Baotić charges for waste disposal services as part of the collection of berthing fees according to the applicable price list.

The price list of environmental sustainability fees depends on the length of the ship and the berth it uses (the price list is attached to the *Plan*).

Prices are subject to corrections and additions.

## ***9. WASTE COLLECTION FLOW***

In the Marina Baotić, the reception of waste is carried out in such a way that the users of the ships that are in the Marina themselves dispose of the waste in the appropriate reception facility, depending on the type and quantity of waste.

The master of the ship must fully and accurately provide information on waste and cargo residues using the prescribed form.

The master of the ship is also responsible for handing over all ship waste to port reception facilities prior to departure. Exceptionally, the ship may proceed to the next port without handing over the waste if it is apparent from the information provided that there is sufficient space on board to accommodate all the waste which has been and which will be generated during the ship's intended voyage to the port where the waste is to be handed over to reception facilities.

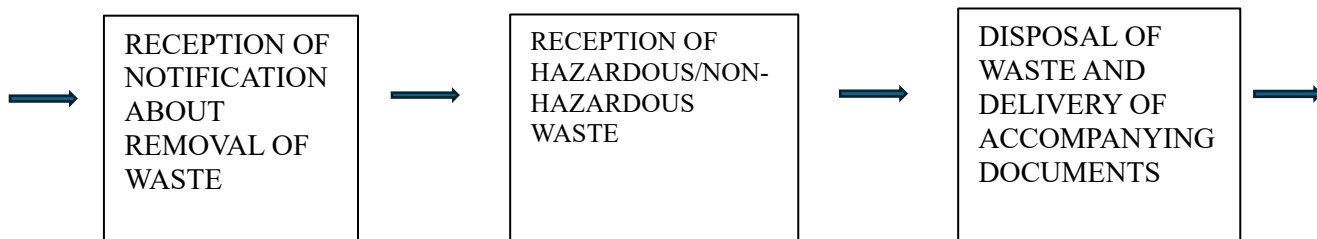
## **WASTE COLLECTION FLOW CHART**

Notifying the concessionaire  
of the handover of waste

Handover of waste

Hazardous waste  
accompanying sheet

Waste processor's  
accompanying sheet



### ***10.PROCEDURES IN CASE OF INADEQUACY OF PORT FACILITIES***

In the event that the users of the Marina Baotić port reception facilities are not satisfied with the number and size of the reception facilities for waste disposal, they fill in the *Form for objections regarding the inadequacy of the reception facilities* (the relevant form attached) which they submit to the Management.

In the event that the objection is well founded, actions, that is, measures to eliminate the inadequacies found will be taken.

The competent Port Captaincy will be notified of the objections received.

### ***11.CONULTATIONS WITH PORT USERS, WASTE CONTRACTORS, OPERATORS AND OTHER INTERESTED PARTIES***

If necessary and at the request of the users of Marina Baotić, waste contractors, operators and other interested parties, the Management shall conduct consultations with the same parties within a reasonable period of time.

### ***12.PERSONS RESPONSIBLE FOR THE IMPLEMENTATION OF THE PLAN***

For the application of this ***Plan*** the following person is responsible:

***Nataša Cecić-Mihotić, mobile phone number: 091 280 0906***

Email: [zastita.okolisa@marinabaotic.com](mailto:zastita.okolisa@marinabaotic.com)

Address: Don Petra Špike 2a, 21218 Seget Donji



### **13. CONCESSIONAIRES**

The management of Marina Baotić has entered into a contract with authorized companies — concessionaires for the collection of hazardous and non-hazardous waste.

The collected waste is taken away twice a week in the off-season, and in the high season more often, daily if necessary.

Other containers are emptied upon the call of the contract concessionaire.

Bulky waste is collected and taken away as agreed with the Management.

For the purpose of reception and disposal of the generated waste, contracts have been signed with authorized concessionaires:

1. municipal waste, glass, paper and plastic — Zeleni Seget d.o.o. Seget Donji
2. hazardous waste (waste used oils, oily waste, packaging contaminated with hazardous substances, etc.) — Cian d.o.o., Split
3. used accumulators and batteries — Cian d.o.o., Split
4. fecal water (on call) — Odvodnja Laboratorij d.o.o. Kaštel Sućurac
5. bulky waste – Brkan-Plano d.o.o. Trogir.

All users of the Marina are familiar with the place where individual tanks, which are located in a conspicuous place, can be found.

The locations for the temporary disposal of waste from port activities are specified in the internal regulations of port concessionaires.

***All waste from ships must be collected separately. Any disposal of waste in places not designated for this is not allowed.***

### **14. FINAL PROVISIONS**

Inspectional supervision over the implementation of this **Plan**, the protection of the sea against pollution of vessels, the regulations in the field of safety of navigation and environmental protection adopted on the basis of this **Plan** shall be carried out by the inspectors for the safety of navigation and other authorized persons of the Port Captaincy of Trogir.

All amendments to this Plan will be posted on a bulletin board in the Marina and shall form an integral part of this Plan. All natural and legal persons using the port, that is, the Marina are obligated to comply at all times with the Plan in the force at that moment.

This ***Plan*** is approved by the Port Captaincy of Split for a period of 3 years.

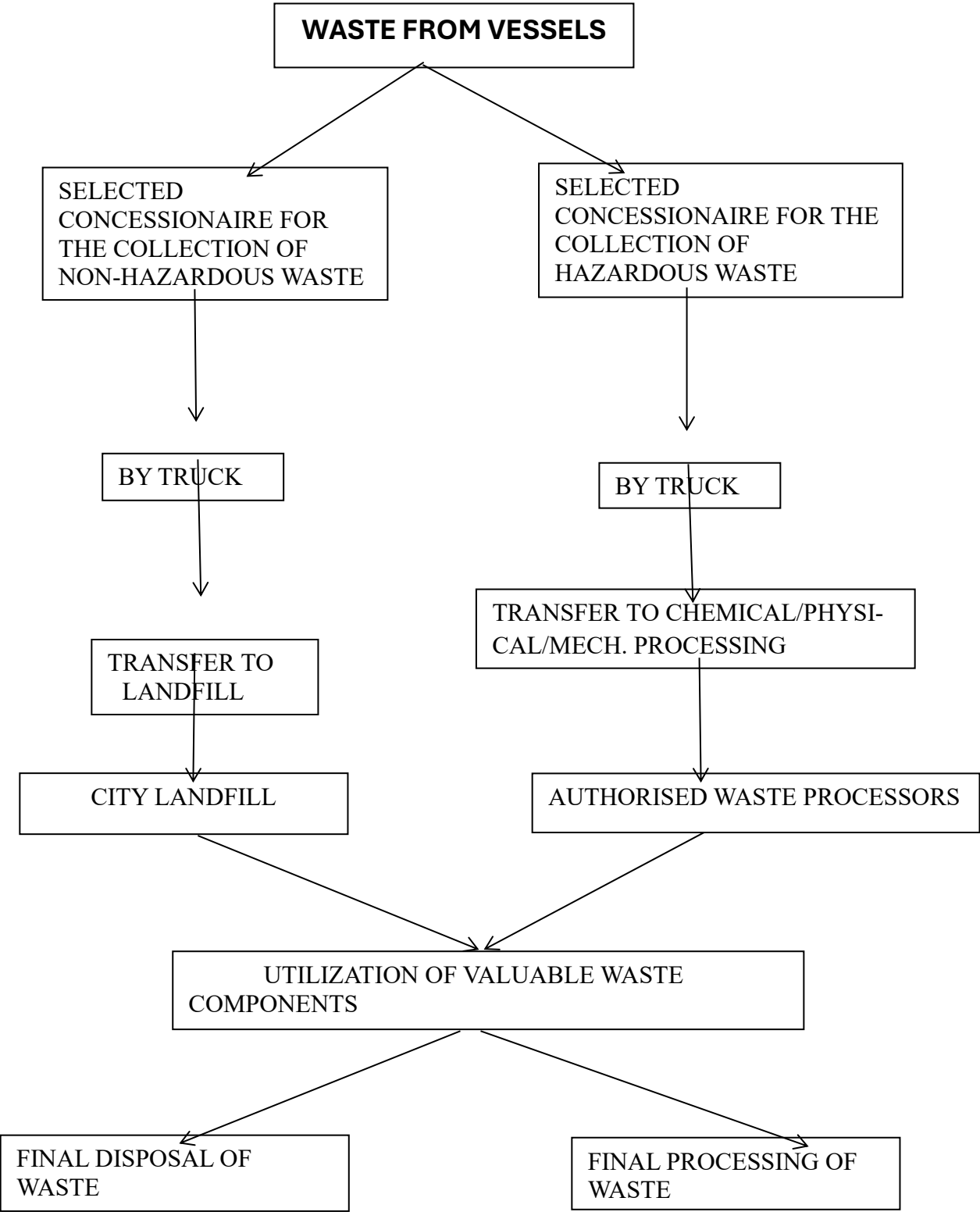
Seget Donji, April 28th 2025.

Director:

Željko Baotić

. . . . .

**SHIP WASTE MANAGEMENT METHOD**



# ***CERTIFICATE OF REGISTRATION OF HAZARDOUS WASTE***

Ship name:	IMO Number:	Call sign:
Port of registry:	Flag state:	
BT:	Port of arrival:	
Agent:	Estimated date of arrival:	
Port from which the ship is arriving:		
Last port in which the ship has disposed of the ship's waste; date:		
Estimated date of departure:	Port the ship is departing to:	

The quantity of the handover of the ship's waste: ALL | PART | NOTHING to the port reception facilities?

Is the following installed and in use on the ship:  
Oil incinerator – (capacity/hour \_\_\_\_ m<sup>3</sup>/h)  
And/or garbage incinerator – (capacity/hour \_\_\_\_ m<sup>3</sup>/h)

Specify the type and quantity of the ship's waste or cargo residues that will be handed over and/or left on the ship<sup>1</sup>

1	2	3	4	5	6
Type of waste	Waste for handover	Max. storage capacity	Quantity of waste left on the ship	Quantity and port which the rest of the waste will be delivered to	Approximate quantity of waste that will be collected until the next port
	CBM (m <sup>3</sup> )	CBM (m <sup>3</sup> )	CBM (m <sup>3</sup> )	CBM (m <sup>3</sup> )	CBM (m <sup>3</sup> )
1 OILS					
SLUDGE					
BILGE WATER					
OTHER					
2 PIECES WASTE					
FOOD					
PLASTICS					
OTHER					
ACCUMULATED FROM WASTE (specify)					
CARGO RESIDUES (specify)					
I confirm that the above data is correct and truthfully stated and that the ship has sufficient suitable space to store accumulated waste which will be generated during the ship's voyage to the next port where it will be handed over.					
NAME AND PROFESSION OF THE OFFICER AND HIS/HER SIGNATURE:					

**ACCOMPANYING WASTE SHEET**

SHIPMENT OF WASTE (A)										PL-O NUM-BER											
KEY NUMBER										MUNICIPAL LATED <input type="checkbox"/>	PRODUCTION-RE-				HAZARDOUS <input type="checkbox"/> NON-HAZARDOUS <input type="checkbox"/>						
HAZARDOUS PROPERTIES HP 1 <input type="checkbox"/> HP 2 <input type="checkbox"/> HP 3 <input type="checkbox"/> HP 4 <input type="checkbox"/> HP 5 <input type="checkbox"/> HP 6 <input type="checkbox"/> HP 7 <input type="checkbox"/> HP 8 <input type="checkbox"/> HP 9 <input type="checkbox"/> HP 10 <input type="checkbox"/> HP 11 <input type="checkbox"/> HP 12 <input type="checkbox"/> HP 13 <input type="checkbox"/> HP 14 <input type="checkbox"/> HP 15 <input type="checkbox"/>																					
PHYSICAL PROPERTIES powder <input type="checkbox"/> solid <input type="checkbox"/> pasty <input type="checkbox"/> muddy <input type="checkbox"/> liquid <input type="checkbox"/> gaseous <input type="checkbox"/> other <input type="checkbox"/>																					
WASTE PACKAGING bulk <input type="checkbox"/> container <input type="checkbox"/> bucket <input type="checkbox"/> canister <input type="checkbox"/> container <input type="checkbox"/> barrel <input type="checkbox"/> box <input type="checkbox"/> bag <input type="checkbox"/> other <input type="checkbox"/>																					
PACKAGING NUMBER																					
DESCRIPTION																					
ORIGIN OF MUNICIPAL WASTE (to be completed only by the public service provider)																					
SENDER (B)										WASTE FLOW (F)											
NAME										WASTE OWNER AT HANDOVER											
PERS. ID. NUMBER/B.P.										REPORT: YES <input type="checkbox"/> NO <input type="checkbox"/>											
NATIONAL CLASSIFICATION OF ACTIVITIES CLASS (2007)										PURPOSE: RECOVERY <input type="checkbox"/> DISPOSAL <input type="checkbox"/>											
CONTACT PERSON										POINT OF DEPARTUR											
CONTACT DETAILS										DESTINATION:											
										QUANTITY: m <sup>3</sup> kg WEIGHING <input type="checkbox"/> ESTIMATE <input type="checkbox"/>											
										TIME OF HANDOVER											
										HANDED OVER BY											
CARRIER (C)										MODE OF TRANSPORTATION: road <input type="checkbox"/> rail <input type="checkbox"/> sea <input type="checkbox"/>											
COMPANY:										air <input type="checkbox"/> inland waterway <input type="checkbox"/>											
PERS. ID. NUMBER										REGISTRATION NUMBER											
AUTHORITY TO TRANSPORT										RECEIVED BY											
CONTACT PERSON										DATE OF HANDOVER											
CONTACT DETAILS										HANDED OVER BY											
RECIPIENT (D)																					
COMPANY										RECEIVED BY											
PERS. ID. NUMBER																					
AUTHORITY TO RECEIVE										TIME OF WEIGHING											
CONTACT PERSON:										QUANTITY RECEIVED kg											
CONTACT DETAILS:																					
BROKER OR TRADER (E)										FINAL PROCESSOR (G)											
COMPANY:										COMPANY											
PERS. ID. NUMBER:										PERS. ID. NUMBER											
AUTHORITY:										PROCESSING AUTHORITY											
CONTACT PERSON:										PROCESSING COMPLETED ON (DATE)											
CONTACT DETAILS:										PROCESSING PROCEDURE											
										CONFIRMED BY											
NOTES AND ATTACHMENTS (H)																					



BALLAST WATER HANDLING REPORT

1. INFORMATION ABOUT THE SHIP		2. TRAVEL INFORMATION		3. BALLAST WATER INFORMATION	
Ship Name:		Port of arrival:		Select unit measure (m³, MT.)	
IMO No.		Date of arrival:		Total amount of ballast water on board:	
Shipowner:		Maritime Agent:		volume	
Type of ship:		Previous port:		unit	
BT:		Country:		m³	
Call sign:		Next port:		Total amount of ballast water on board:	
Flag state:		Country:		volume	
				unit	
				m³	

4. CARGO DATA: total cargo quantity (Type/MT):                      for loading                      M/T                      for unloading                      MT

5. BALLAST WATER DATA:                      Total number of tanks from which ballast is intended to be unloaded:

Of the tanks from which ballast will be discharged, how many have been subjected to: ballast water exchange \_\_\_\_\_ or some alternative ballast water treatment:

Indicate alternative methods of ballast water treatment, if any:

If ballast water treatment has not been carried out, indicate why not:

Is there a Ballast Water Treatment Plan on board? YES ☐ NO ☐ Does the Ballast Water Management Plan apply on board? YES ☐ NO ☐

Are there IMO Ballast Water Management Guidelines on board [Res. A. 868 (20)]? YES ☐ NO ☐

6. BALLAST WATER HISTORY: List all tanks from which ballast will be discharged in port upon arrival; IF YOU ARE DISCHARGING BALLAST GO TO NO. 7

Tanks/ Storage (specify individual tanks)	Origin of ballast waters				Ballast water treatment					Ballast water discharge				
	Date D.D./MM/YYYY	Port or LAT. LONG.	Volume (unit)	Temp. (unit/°C)	Date D.D./MM/YYYY	Endpoint LAT. LONG.	Volume (unit)	% Exchanges	Exchange/treatment method (ER/FT/ALT)	The state of the sea (m)	Date D.D./MM/YYYY	Port or LAT. LONG.	Volume (unit)	Salinity (unit)
			m³	C			m³		-				m³	sg
			m³	C			m³		-				m³	sg
			m³	C			m³		-				m³	sg
			m³	C			m³		-				m³	sg
			m³	C			m³		-				m³	sg
			m³	C			m³		-				m³	sg
Abbreviations for tanks where ballast waters are: Forepeak = FP, Aftpeak = AP, Double Bottom = DB, Wing = WT, Topside = TS, Cargo Hold = CH; Other = O														

7. NAME AND SURNAME OF THE SHIP'S MASTER AND SIGNATURE: \_\_\_\_\_

**PRICELIST FOR ENVIRONMENTAL SUSTAINABILITY FEES**

Length overall (m)	Environmental Sustainability Fee – daily berth	Environmental Sustainability Fee – land berth	Environmental Sustainability Fee – semiannual berth	Environmental Sustainability Fee – see berth	Environmental Sustainability Fee – land berth – combined berth	Environmental Sustainability Fee – charter berth
up to 8.99	0.80	28.40	28.20	114.20	144.00	115.35
9-9.99	0.80	58.50	32.30	114.20	144.00	115.35
10-10.99	0.80	65.80	36.20	114.20	144.00	115.35
11-11.99	0.80	73.20	40.40	114.20	144.00	115.35
12-12.99	0.95	82.90	45.70	114.20	144.00	115.35
13-13.99	1.19	89.60	49.40	114.20	144.00	115.35
14-14.99	1.29	97.90	54.00	114.20	144.00	115.35
15-15.99	1.39	108.50	59.90	128.00	158.00	127.02
16-16.99	1.49	11.95	64.00	142.00	175.00	139.61
17-17.99	1.65	127.90	70.40	158.00	189.00	152.95
18-18.99	1.85	138.30	76.00	175.00	202.00	166.43
19-19.99	2.29	147.60	81.10	192.00	on arrangement	175.84
20-20.99	2.29	on arrangement	on arrangement	209.00	on arrangement	194.58
21-21.99	on arrangement	on arrangement	on arrangement	225.00	on arrangement	205.62
22-22.99	on arrangement	on arrangement	on arrangement	240.00	on arrangement	217.81
23-23.99	on arrangement	on arrangement	on arrangement	255.00	on arrangement	225.06
24-24.99	on arrangement	on arrangement	on arrangement	275.00	on arrangement	233.16
25-25.99	on arrangement	on arrangement	on arrangement	295.00	on arrangement	on arrangement
26-26.99	on arrangement	on arrangement	on arrangement	311.00	on arrangement	on arrangement
27-27.99	on arrangement	on arrangement	on arrangement	332.00	on arrangement	on arrangement

Note: The price for multihulls is increased by 100%.



## ***INADEQUACY OF RECEPTION FACILITIES***

### **1. LOCATION**

<b>Name of the marina:</b>
<b>Berth number:</b>
<b>Date:</b>

### **2. TYPE AND QUANTITY OF WASTE TO BE HANDED OVER TO PORT RECEPTION FACILITIES**

TYPE OF WASTE	QUANTITY	TYPE OF WASTE	QUANTITY
Used waste oils	m3	Used batteries and accumulators	m3
Oily wastewater	m3	Paperr	m3
Oily cloths	m3	Plastic packaging	m3
Oily filters	m3	Glass	m3
Other	m3		

### **3. DESCRIPTION OF THE PROBLEM**

<b>Technical inability to use a facility:</b>	<b>Delay:</b>
<b>Inconvenient position of reception facilities:</b>	<b>Other:</b>

### **4. VESSEL DATA**

<b>Vessel Name/Number:</b>	
<b>Vessel owner/user:</b>	
<b>Flag state:</b>	

<b>Date of submission of the inadequacy form:</b>	
<b>Vessel owner/user:</b>	<b>Signature:</b>
<b>Representative of the Marina Trogir:</b>	<b>Signature:</b>



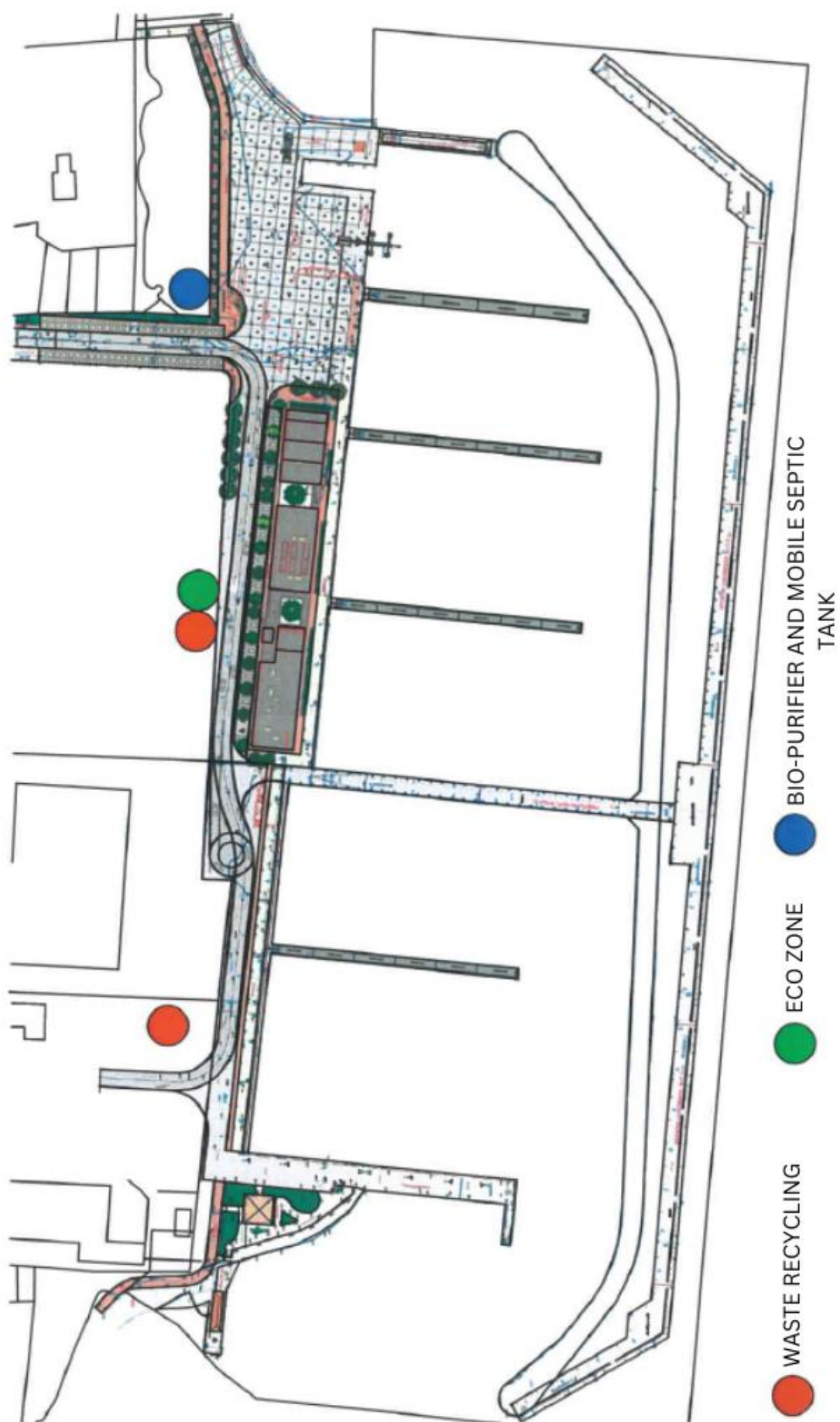
The recycling zone for municipal waste disposal



The eco-zone for hazardous waste disposal



The fecal water mobile pump



The locations of the reception facilities in the Marina Baotic